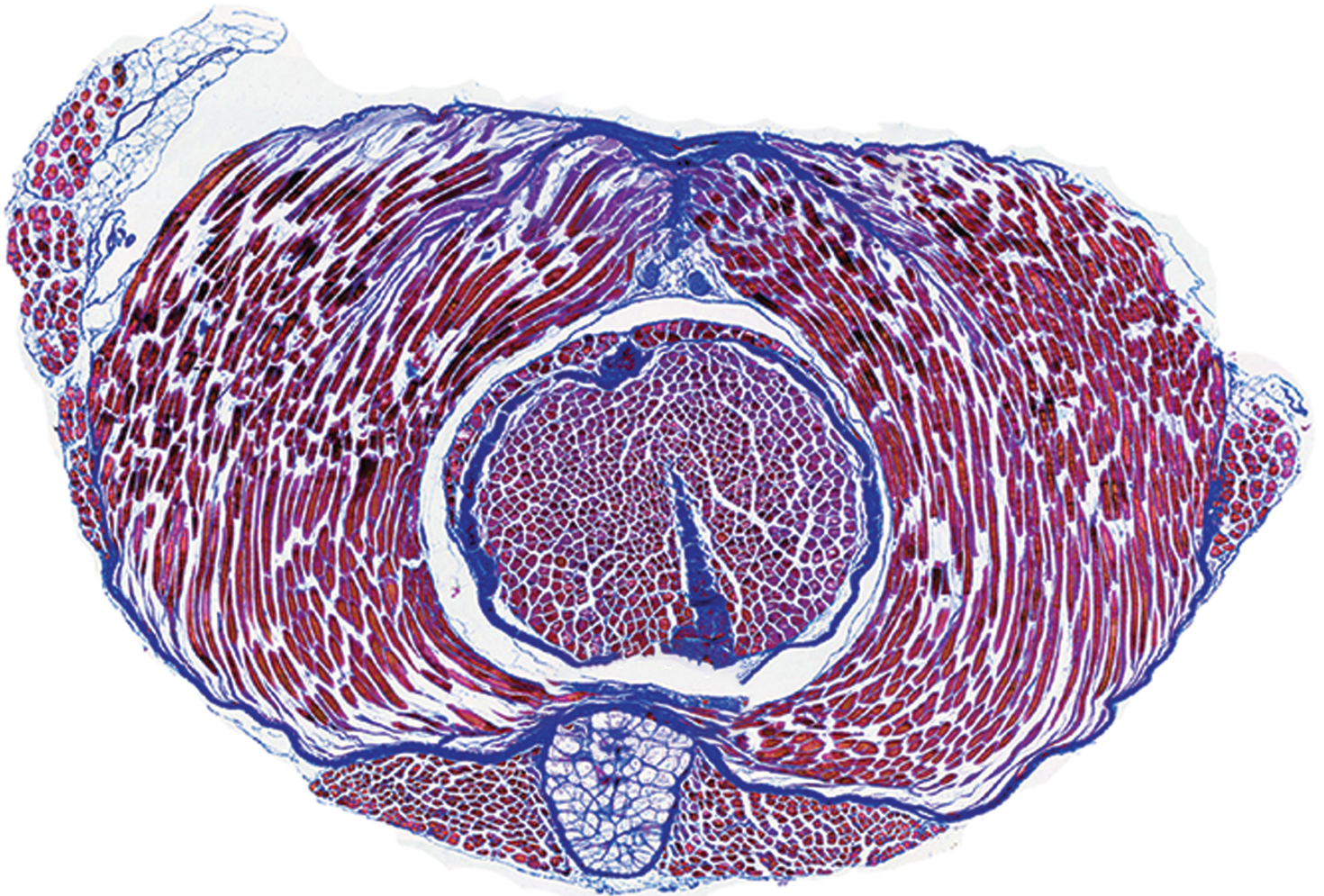


Volume 280, Number 6, June 2019

JOURNAL OF

morphology

ISSN 0362-2525



WILEY

Editor: J. Matthias Starck

morphology

FOUNDED BY C.O. WHITMAN, 1887
Originally Founded by the Wistar Institute

Editor

J. Matthias Starck

Department of Biology II, University of Munich (LMU) – Biocenter,
Planegg-Martinsried, Germany
E-mail: starck@jmorph.com

Advisory Board

William M. Kier

Department of Biology
University of North Carolina
Chapel Hill, NC, USA
billkier@bio.unc.edu

Reinhardt Møbjerg Kristensen

Zoological Museum and
Arctic Station
University of Copenhagen
Copenhagen, DENMARK
rmkristensen@snm.ku.dk

Peter Wainwright

Department of Evolution & Ecology
University of California
Davis, CA, USA
PCWainwright@ucdavis.edu

Marvalee H. Wake

Department of Integrative Biology
University of California
Berkeley, CA, USA
mhwake@socrates.berkeley.edu

Editorial Board

Anick Abourachid

Museum national d'Histoire naturelle,
Paris, FRANCE

Natalia Biserova

M. V. Lomonosov Moscow State University
Moscow, RUSSIA

Richard Blob

Clemson University
Clemson, SC, USA

Shaun P. Collin

La Trobe University,
Bundoora, Victoria,
AUSTRALIA

Rui Diogo

Howard University, Washington, DC, USA

Elisabeth Dumont

University of Massachusetts, Amherst
Amherst, MA, USA

Peter Funch

Aarhus University
Aarhus, DENMARK

Joachim Haug

LMU München, Planegg-artinsried, GERMANY

Anthony Herrel

Département d'Ecologie et de Gestion de
la Biodiversité, Paris, FRANCE

Richard Hochberg

University of Massachusetts
Lowell, MA, USA

Shigeru Kuratani

Evolutionary Morphology Laboratory
RIKEN
Kobe, JAPAN

Paula Mabee

University of South Dakota
Vermillion, SD, USA

José Eduardo Marian

Instituto de Biociências da Universidade de
São Paulo, BRAZIL

Christopher R. Murphy

The University of Sydney
Sydney, AUSTRALIA

Annemarié Oldewage

University of Johannesburg, Johannesburg
SOUTH AFRICA

Fernando Pardos

Universidad Complutense
Madrid, SPAIN

Irina Ruf

Senckenberg Museum, Frankfurt, GERMANY

Andreas Schmidt-Rhaesa

Universität Hamburg
Hamburg, GERMANY

Thomas Stach

Humboldt-Universität Berlin
Berlin, GERMANY

Elena Temereva

M. V. Lomonosov Moscow State University,
Moscow, RUSSIA

Bret Tobalske

University of Montana, Missoula, MT, USA

Alexander Tzvetlin

M. V. Lomonosov Moscow
State University
Moscow, RUSSIA

Jacqueline F. Webb

University of Rhode Island
Kingston, RI, USA

Cheryl D. Wilga

University of Alaska Anchorage, Anchorage,
AK, USA

JOURNAL OF MORPHOLOGY welcomes articles of original research in cytology, protozoology, embryology, general, comparative and functional morphology. Preliminary notices or articles of a purely taxonomic or ecological nature are not included. No paper which has already appeared will be accepted nor will simultaneous publications elsewhere be allowed. Manuscripts may now be submitted online via Manuscript Central at <http://mc.manuscriptcentral.com/jmor>.

Copyright and Copying: Copyright © 2019 Wiley Periodicals, Inc. All rights reserved. No part of this publication may be reproduced, stored or transmitted in any form or by any means without the prior permission in writing from the copyright holder. Authorization to copy items for internal and personal use is granted by the copyright holder for libraries and other users registered with their local Reproduction Rights Organisation (RRO), e.g. Copyright Clearance Center (CCC), 222 Rosewood Drive, Danvers, MA 01923, USA (www.copyright.com), provided the appropriate fee is paid directly to the RRO. This consent does not extend to other kinds of copying such as copying for general distribution, for advertising or promotional purposes, for republication, for creating new collective works or for resale. Permissions for such reuse can be obtained using the RightsLink "Request Permissions" link on Wiley Online Library. Special requests should be addressed to: permissions@wiley.com

JOURNAL OF MORPHOLOGY, (Print ISSN 0362-2525; Online ISSN 1097-4687), is published monthly by Wiley Subscription Services, Inc., a Wiley Company, 111 River St., Hoboken, NJ 07030-5774 USA. Periodicals Postage Paid at Hoboken, NJ and additional offices. Postmaster: Send all address changes to *JOURNAL OF MORPHOLOGY*, John Wiley & Sons Inc., C/O The Sheridan Press, PO Box 465, Hanover, PA 17331 USA. **Information for subscribers:** *JOURNAL OF MORPHOLOGY* is published in 12 issues per year. Institutional subscription prices for 2019 are: Print & Online: \$13,499 (US), US\$13,499 (Canada & Mexico), £7,092 (UK), €8,970 (Europe), US\$13,896 (Rest of World). Prices are exclusive of tax. Asia-Pacific GST, Canadian GST/HST and European VAT will be applied at the appropriate rates. For more information on current tax rates, please go to www.wileyonlinelibrary.com/tax-vat. The price includes online access to the current and all online backfiles to January 1st 2014, where available. For other pricing options, including access information and terms and conditions, please visit www.wileyonlinelibrary.com/access. **Delivery Terms and Legal Title:** Where the subscription price includes print issues and delivery is to the recipient's address, delivery terms are Delivered at Place (DAP); the recipient is responsible for paying any import duty or taxes. Title to all issues transfers Free of Board (FOB) our shipping point, freight prepaid. We will endeavour to fulfil claims for missing or damaged copies within six months of publication, within our reasonable discretion and subject to availability. **Back issues:** Single issues from current and recent volumes are available at the current single issue price from cs-journals@wiley.com. Earlier issues may be obtained from Periodicals Service Company, 351 Fairview Avenue - Ste 300, Hudson, NY 12534, USA. Tel: +1 518 822-9300, Fax: +1 518 822-9305, Email: psc@periodicals.com. **Journal Customer Services:** For ordering information, claims and any enquiry concerning your journal subscription please go to www.wileyonlinelibrary.com/ask or contact your nearest office. **Americas:** Email: cs-journals@wiley.com; Tel: +1 781 388 8598 or +1 800 835 6770 (toll free in the USA & Canada). **Europe, Middle East and Africa:** Email: cs-journals@wiley.com; Tel: +44 (0) 1865 778315. **Asia Pacific:** Email: cs-journals@wiley.com; Tel: +65 6511 8000. **Japan:** For Japanese speaking support, Email: cs-japan@wiley.com; **Visit our Online Customer Help** available in 7 languages at www.wileycustomerhelp.com/ask. Claims for undelivered copies will be accepted only after the following issue has been received. Please enclose a copy of the mailing label or cite your subscriber reference number in order to expedite handling. Missing copies will be supplied when losses in transit and where reserve stock permits. If claims are not resolved satisfactorily, please write Journal Customer Services. Production Editor: Donna Tarman (email: jmor@wiley.com). **Advertising:** Joe Tomaszewski (Email: jtomaszewski@wiley.com). **Commercial Reprints:** E-mail: corporatesales@wiley.com; corporatesalesusa@wiley.com; or corporatesalesaustralia@wiley.com. **Author Reprints (50–500 copies):** Order online: <http://www.sheridanreprints.com/orderForm.html>. E-mail: chris.jones@sheridan.com. **Note to NIH Grantees:** Pursuant to NIH mandate, Wiley will post the accepted version of contributions authored by NIH grant-holders to PubMed Central upon acceptance. This accepted version will be made publicly available 12 months after publication. For further information, see www.wiley.com/go/nihmandate. For submission instructions, subscription and all other information visit: [wileyonlinelibrary.com/journal/jmor](http://www.wileyonlinelibrary.com/journal/jmor). *JOURNAL OF MORPHOLOGY* accepts articles for Open Access publication. Please visit <http://olabout.wiley.com/WileyCDA/Section/id-828081.html> for further information about OnlineOpen.

Abstracting and Indexing Services: The Journal is indexed by ASFA: Aquatic Sciences & Fisheries Abstracts; BIOBASE: Current Awareness in Biological Sciences; Biological Abstracts; BIOSIS Previews; CAS: Chemical Abstracts Service; Chemical Abstracts Service/SciFinder; CSA Biological Sciences Database; Current Contents: Life Sciences; Index Medicus/MEDLINE; Journal Citation Reports/Science Edition; MEDLINE; PubMed Dietary Supplement Subset; Science Citation Index; Science Citation Index Expanded; SCOPUS; VINITI; Web of Science; Zoological Record.

Wiley's Corporate Citizenship initiative seeks to address the environmental, social, economic, and ethical challenges faced in our business and which are important to our diverse stakeholder groups. Since launching the initiative, we have focused on sharing our content with those in need, enhancing community philanthropy, reducing our carbon impact, creating global guidelines and best practices for paper use, establishing a vendor code of ethics, and engaging our colleagues and other stakeholders in our efforts. Follow our progress at www.wiley.com/go/citizenship.

Disclaimer: The Publisher and Editors cannot be held responsible for errors or any consequences arising from the use of information contained in this journal; the views and opinions expressed do not necessarily reflect those of the Publisher and Editors, neither does the publication of advertisements constitute any endorsement by the Publisher and Editors of the products advertised. View this journal online at [wileyonlinelibrary.com/journal/jmor](http://www.wileyonlinelibrary.com/journal/jmor) Wiley is a founding member of the UN-backed HINARI, AGORA, and OARE initiatives. They are now collectively known as Research4Life, making online scientific content available free or at nominal cost to researchers in developing countries. Please visit Wiley's Content Access - Corporate Citizenship site: <http://www.wiley.com/WileyCDA/Section/id-390082.html>

Printed in Singapore by Markono Print Media Pte Ltd.

CONTENTS

RESEARCH ARTICLES

- 778 **Comparative morphological examination of vertebral bodies of teleost fish using high-resolution micro-CT scans**
Misaki Sakashita, Mao Sato, and Shigeru Kondo
Published online 4 April 2019
- 796 **Killing them softly: Ontogeny of jaw mechanics and stiffness in mollusk-feeding freshwater stingrays**
Kelsi M. Rutledge, Adam P. Summers, and Matthew A. Kolmann
Published online 5 April 2019
- 809 **Ultrastructure and cuticle formation of the carapace in the myodocopan ostracod exemplified by *Euphilomedes japonica* (Crustacea: Ostracoda)**
Shinnosuke Yamada
Published online 1 April 2019
- 827 **Powering the hagfish “bite”: The functional morphology of the retractor complex of two hagfish feeding apparatuses**
Benjamin Luke Clubb, Andrew Jonathan Clark, and Theodore Akira Uyeno
Published online 30 March 2019
- 841 **Hans Bluntschli in Berne: Researching reproduction in hedgehog tenrecs (Afrosoricida, Tenrecidae)**
Anthony M. Carter
Published online 30 March 2019
- 849 **“Keep your feet on the ground”: Simulated range of motion and hind foot posture of the Middle Jurassic sauropod *Rhoetosaurus browni* and its implications for sauropod biology**
Andréas Jannel, Jay P. Nair, Olga Panagiotopoulou, Anthony Romilio, and Steven W. Salisbury
Published online 9 April 2019
- 879 **Locomotory adaptations in entoptychine gophers (Rodentia: Geomyidae) and the mosaic evolution of fossoriality**
Jonathan J.M. Calede, Joshua X. Samuels, and Meng Chen
Published online 22 April 2019

- 908 Flipper bone distribution reveals flexible trailing edge in underwater flying marine tetrapods
Mark C. DeBlois and Ryosuke Motani
Published online 22 April 2019

ERRATUM

- 925 Erratum

Volume 280, Number 6 was mailed the week of May 6, 2019.

Cover illustration. Hagfish use forceful retractions of a dental plate to shear and ingest food. Retractable force is generated by the retractor muscle complex of the posterior hagfish feeding apparatus. In this issue of the *Journal of Morphology*, Clubb and coauthors (pp. 827–840) present a detailed analysis of the hagfish feeding apparatus and derive a novel functional model. – The cover image shows a transverse section of the tubulatus muscle of the feeding apparatus of *Eptatretus stoutii*.